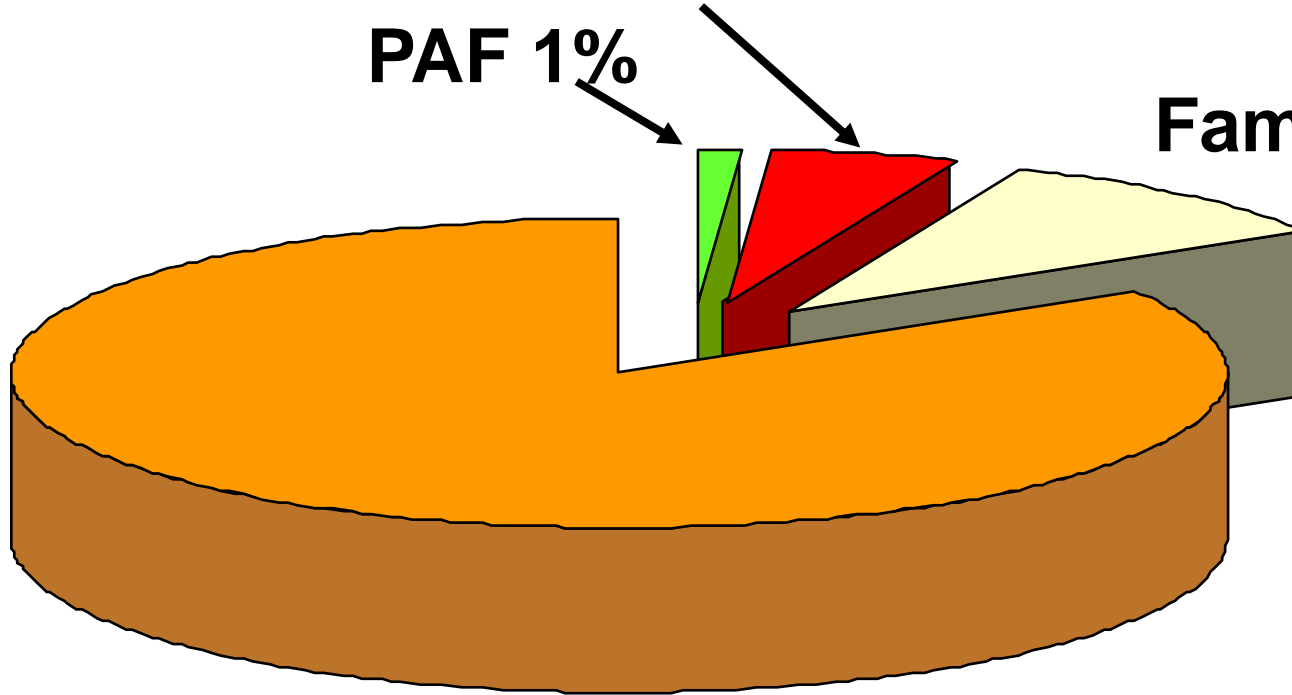


Cancers colorectaux

Héréditaires : HNPCC 2-4 %

PAF 1%

Familiaux 10%

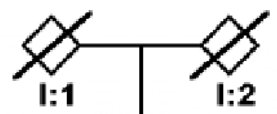


Sporadiques 80-85 %

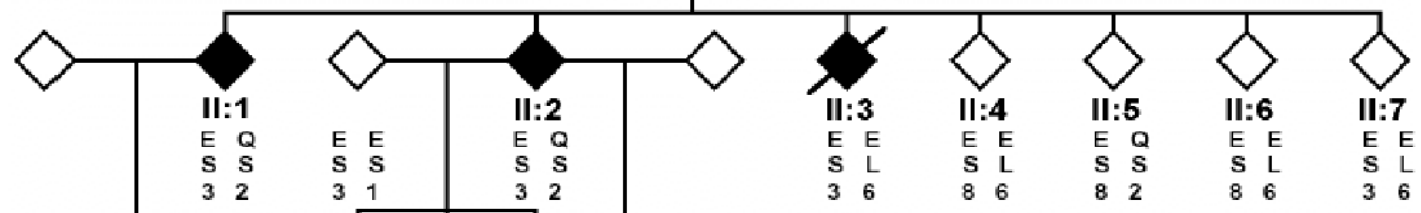
Polypose liée à MYH

- Transmission autosomale récessive
- Phénotype PAF (mais pas de polypes par milliers) ou PAF atténuée
- Polypes sont des adénomes, parfois plans, abondants dans le côlon droit
- Des lésions extra-coliques sont possibles (en particulier duodénales)
- Un diagnostic immunohistochimique serait possible?

I.



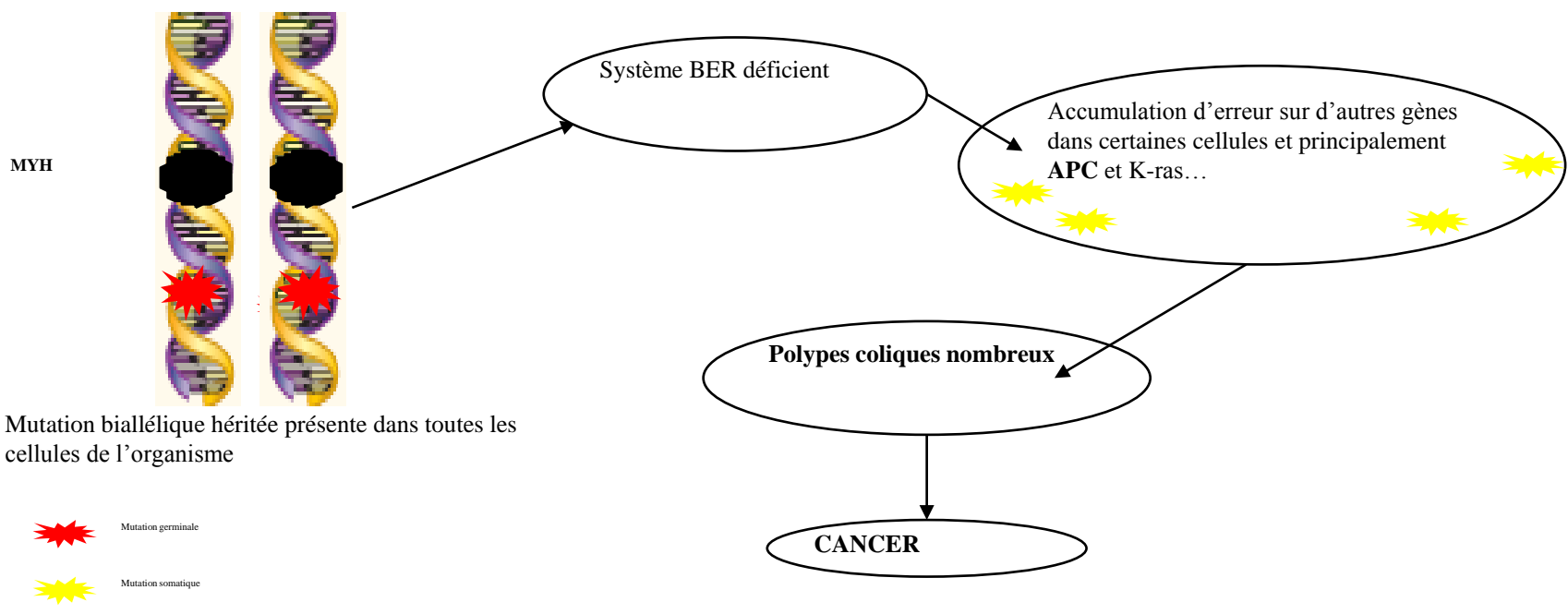
II.

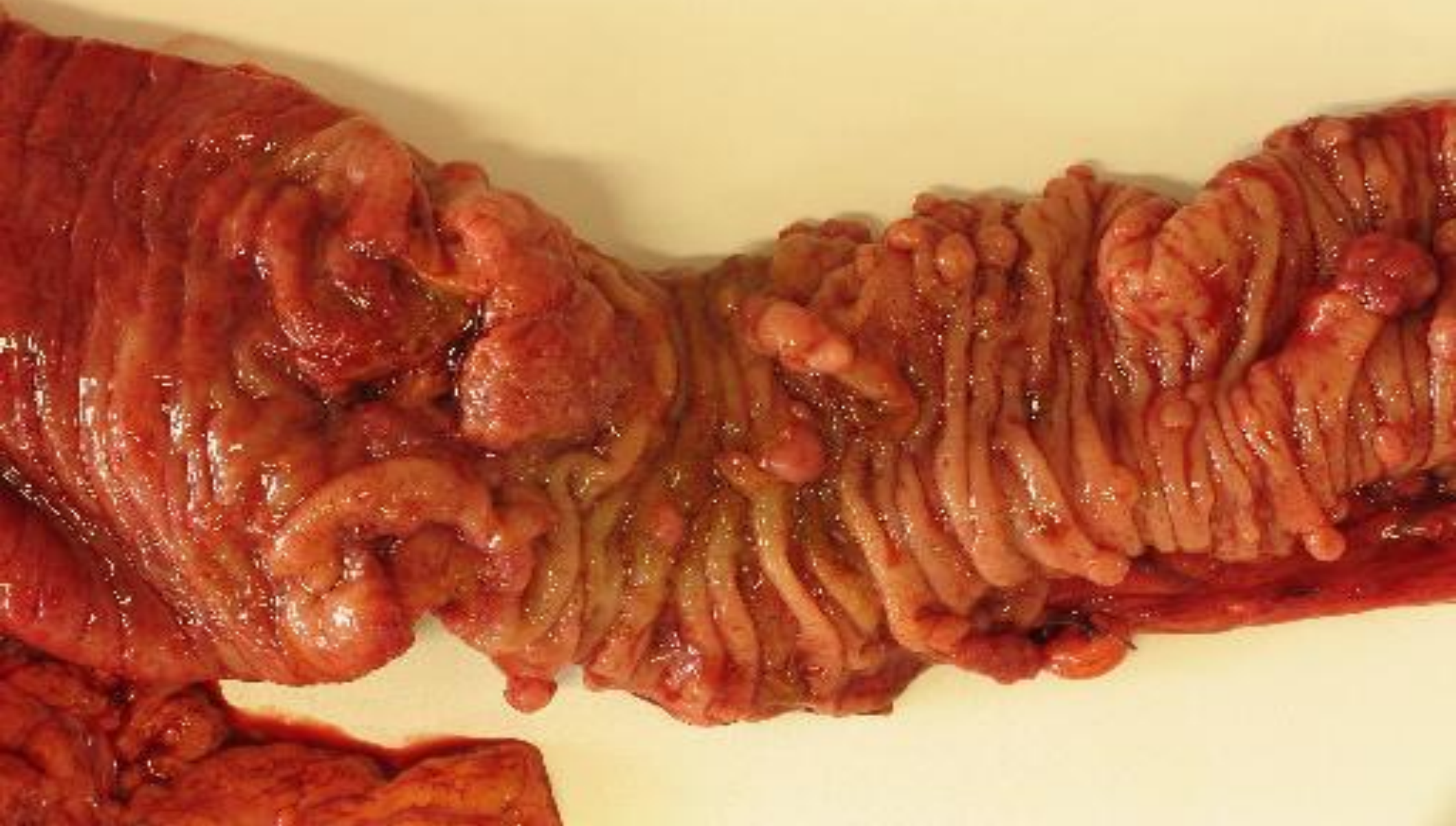


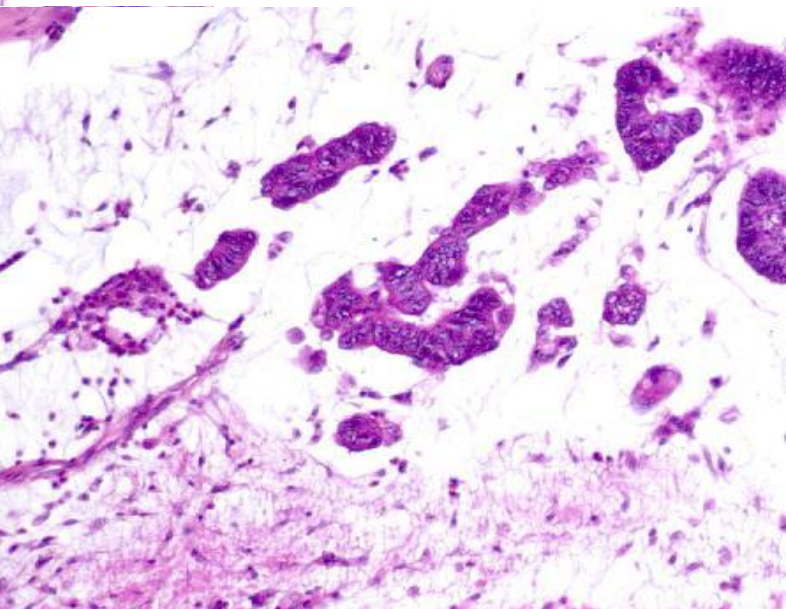
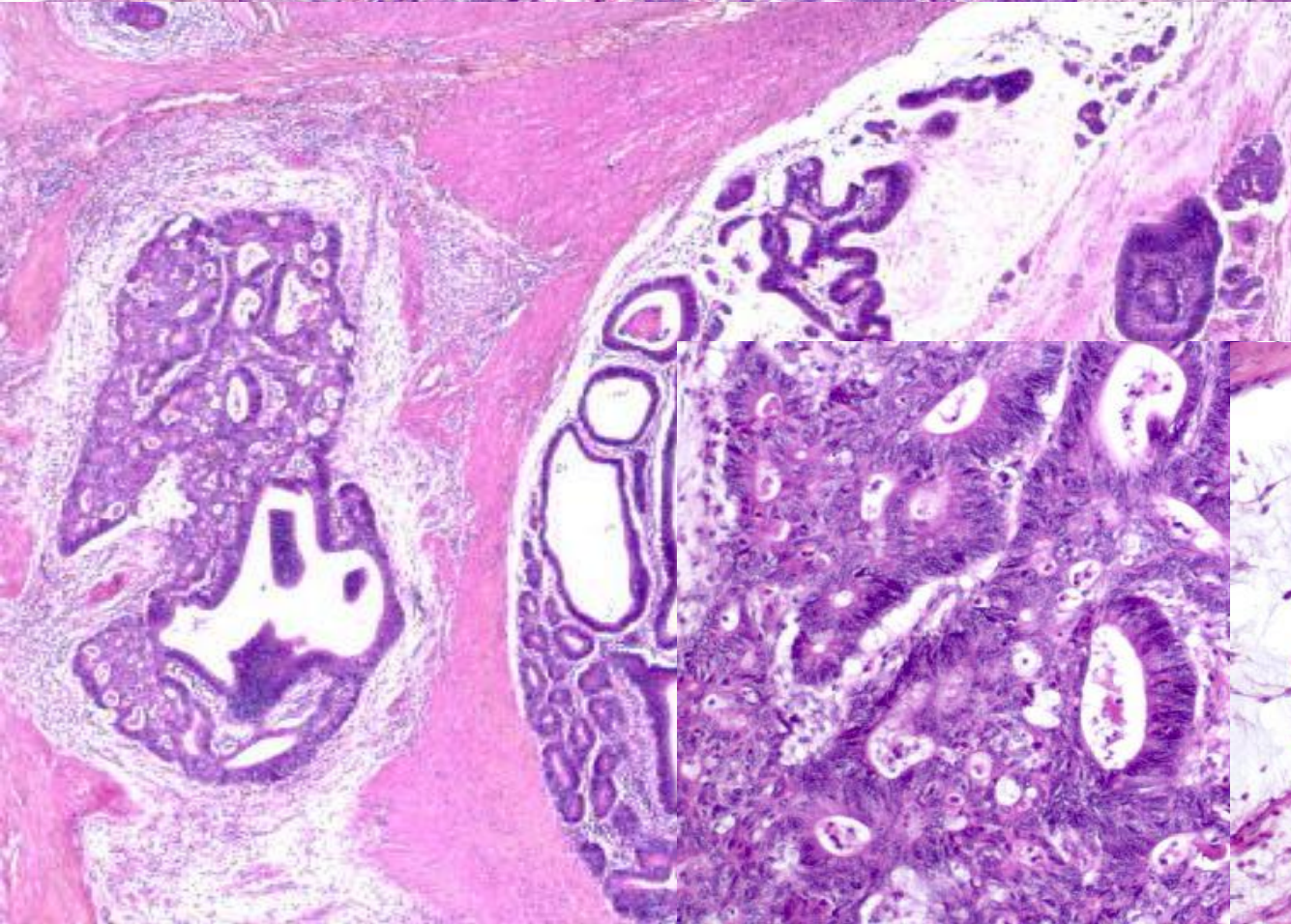
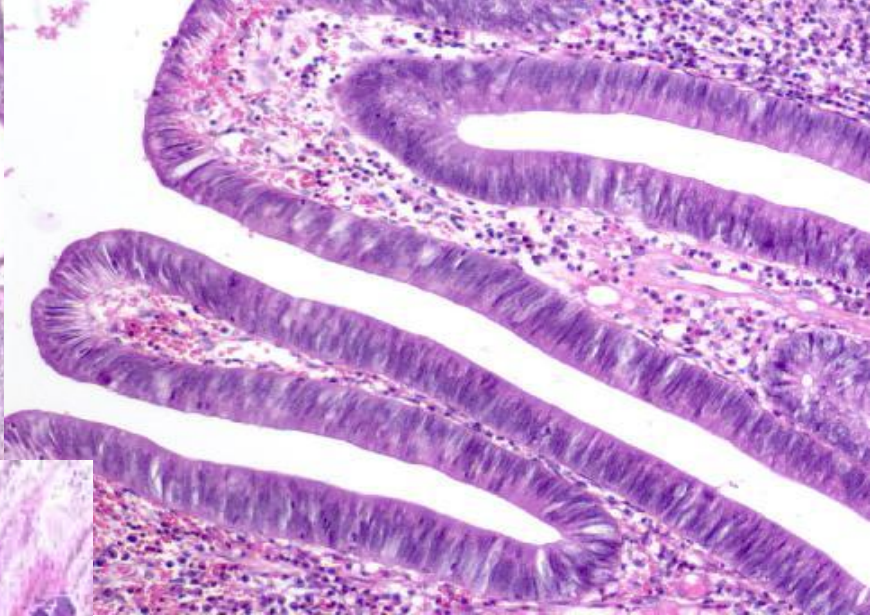
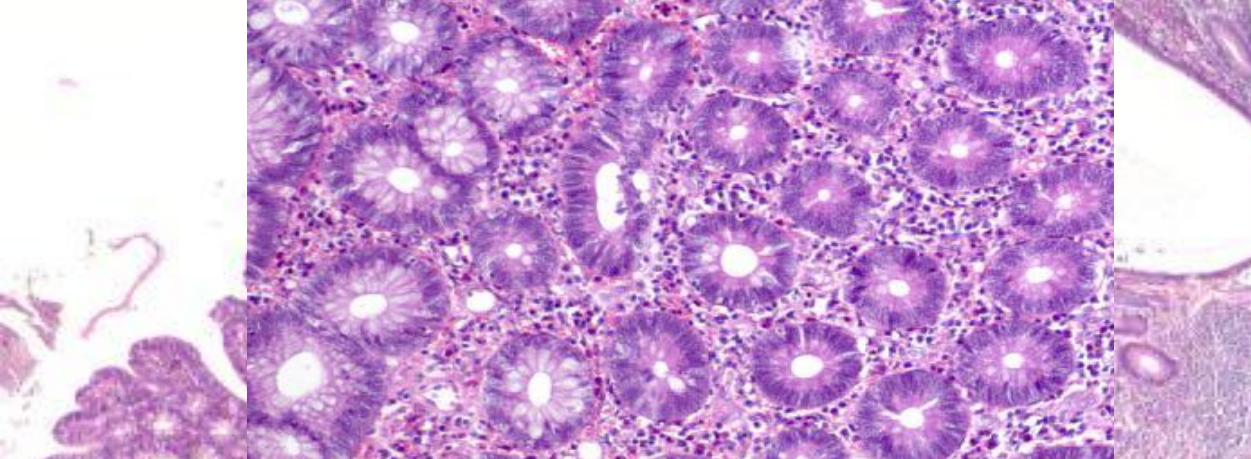
III.



key
 1317 E/Q
 2497 S/L
 DP1

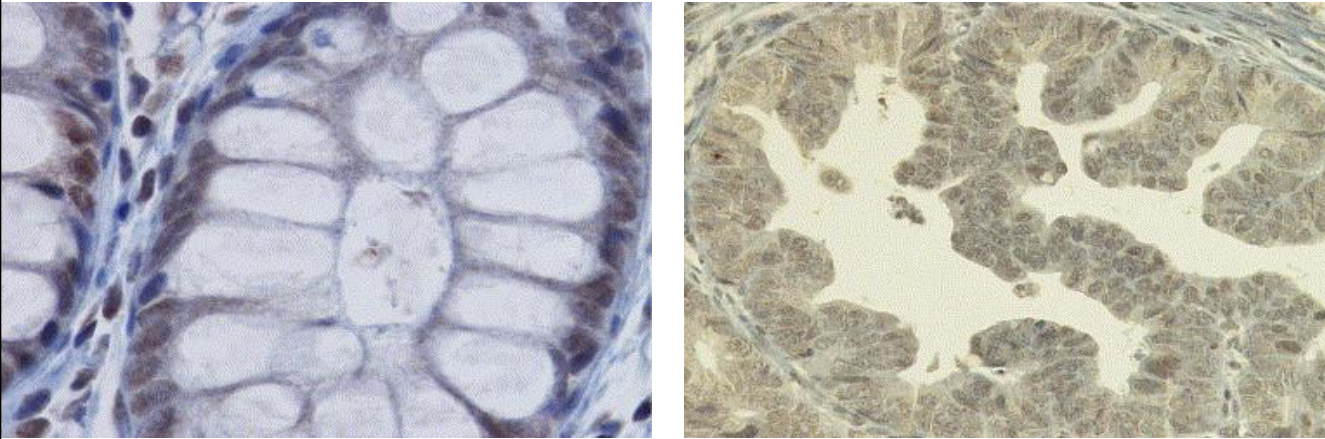




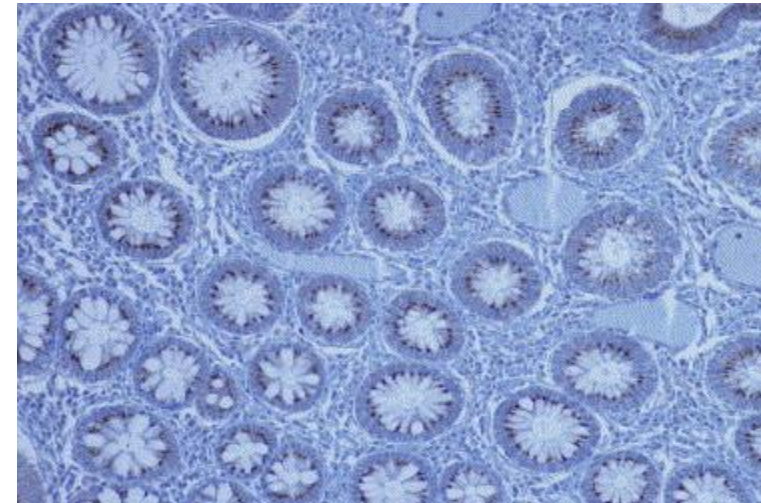
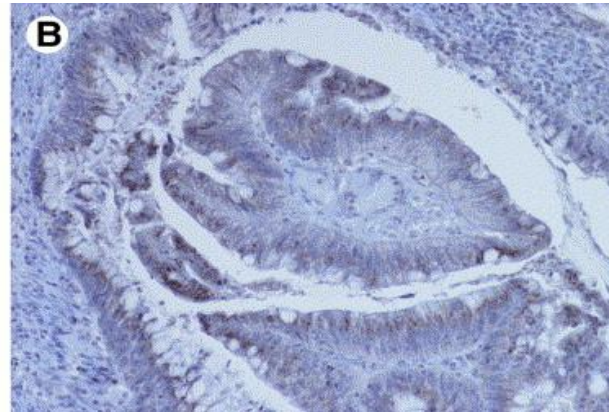
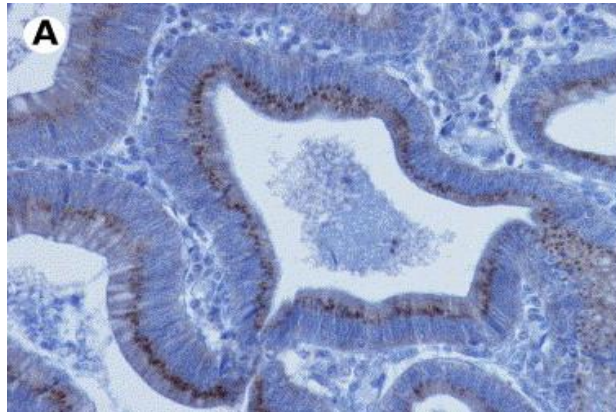
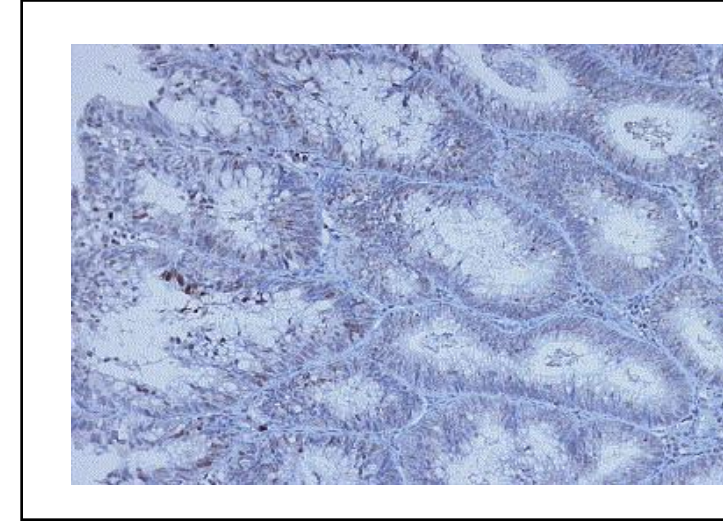


Polypose liée à MYH

Normal



PAF - APC



PAF/PAFA - MYH