

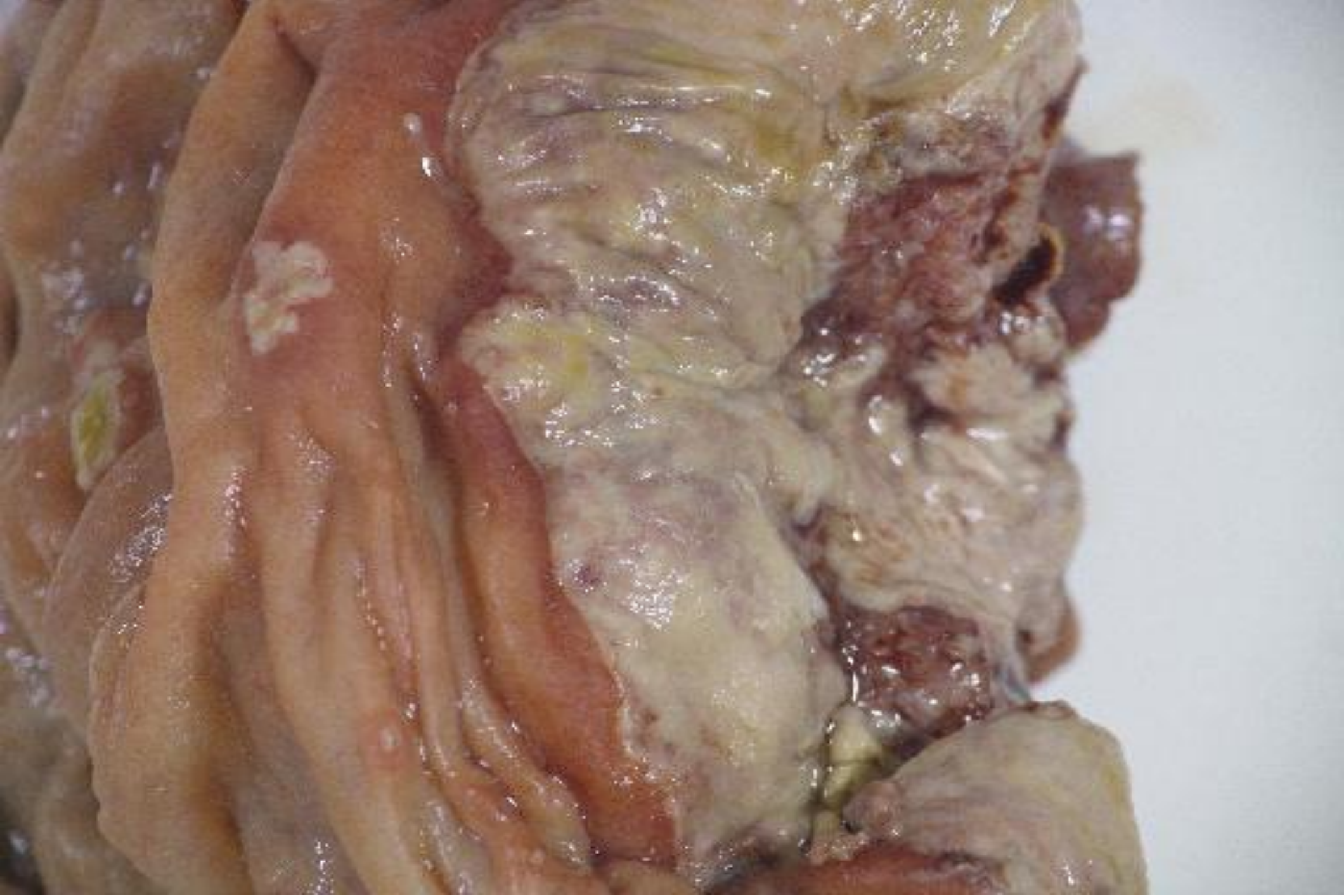
Cas N°11

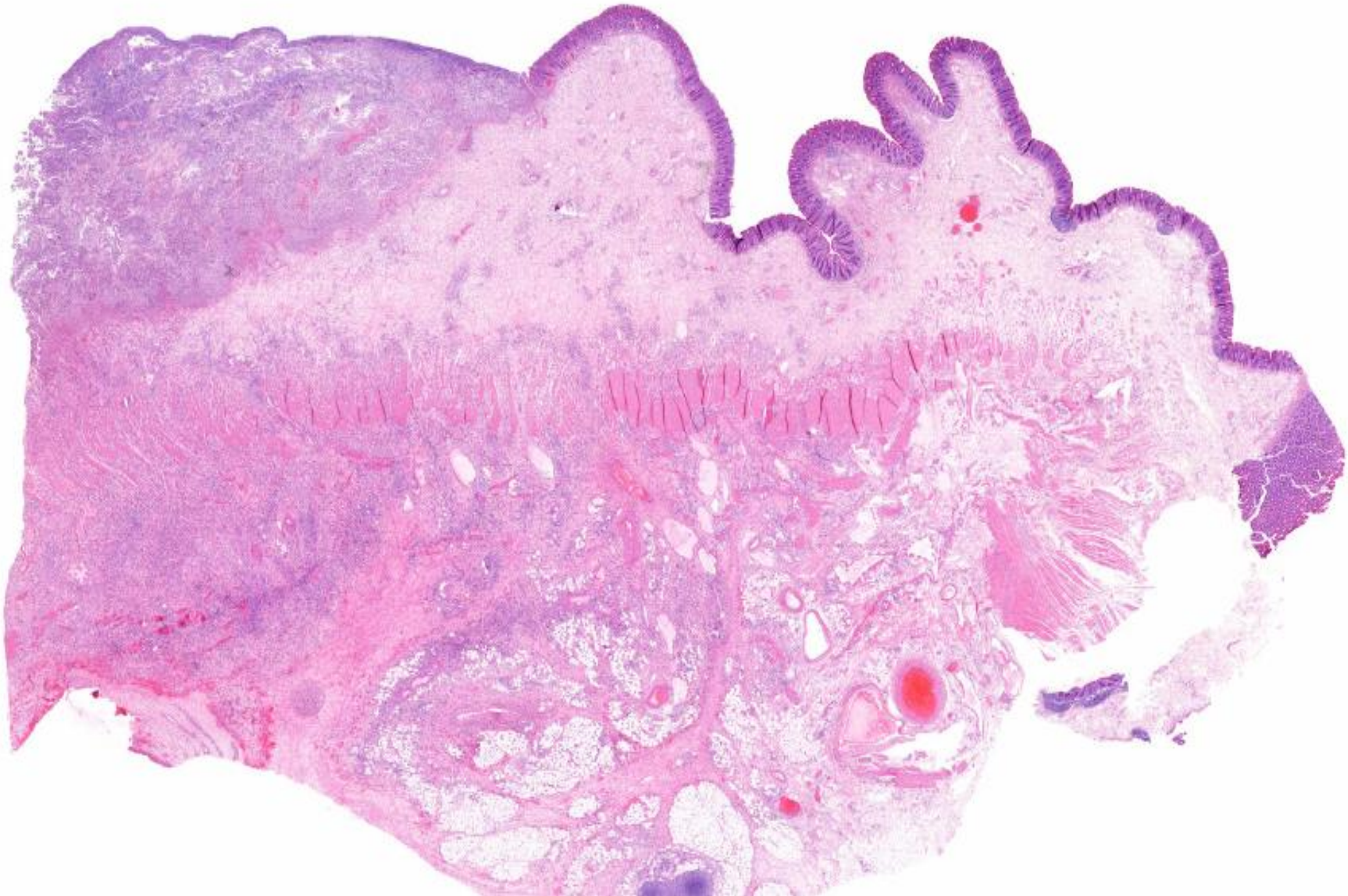
Femme de 59 ans

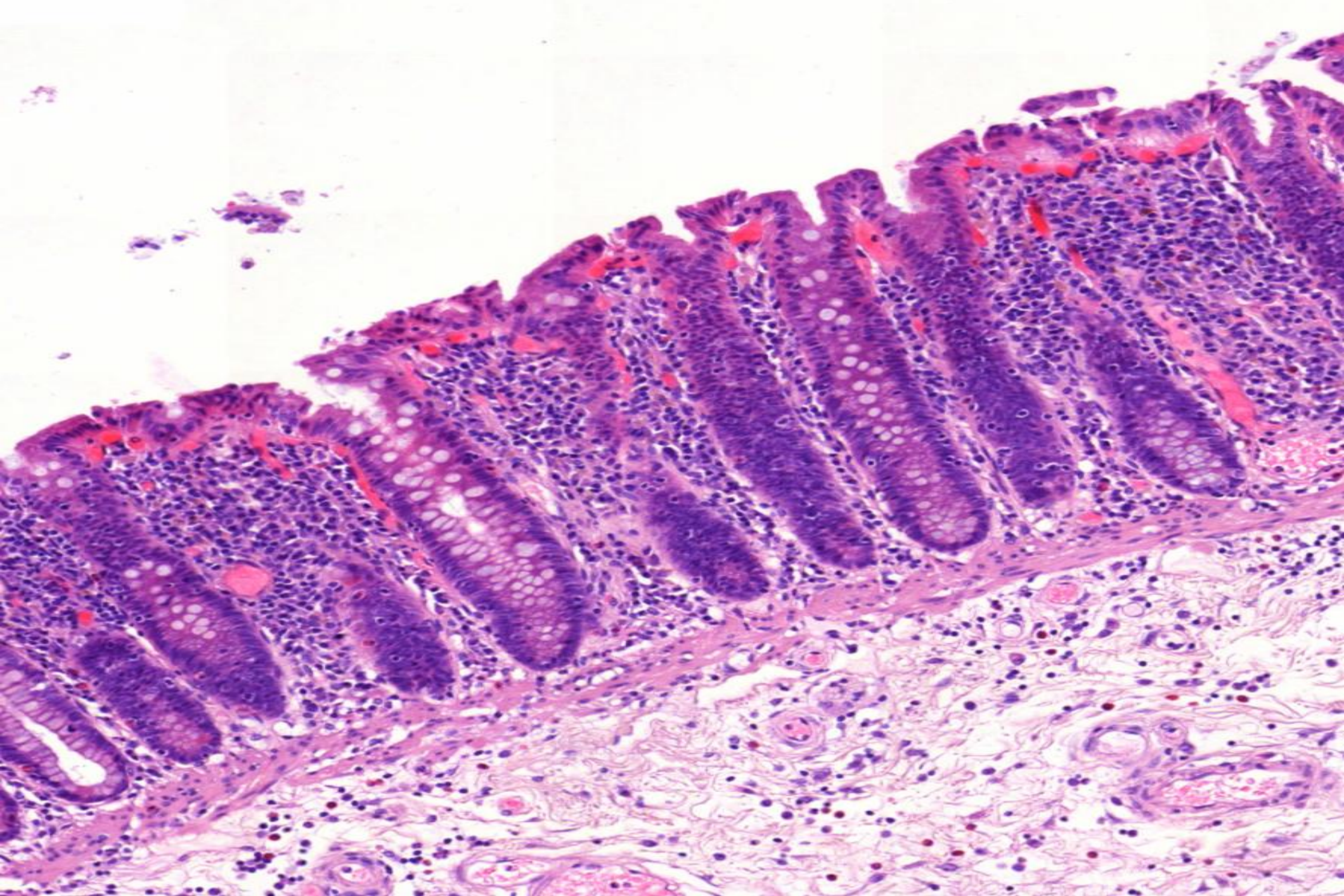
Lésion d'aspect tumoral et abcédé du caecum avec images hépatiques multiples d'allure secondaire.

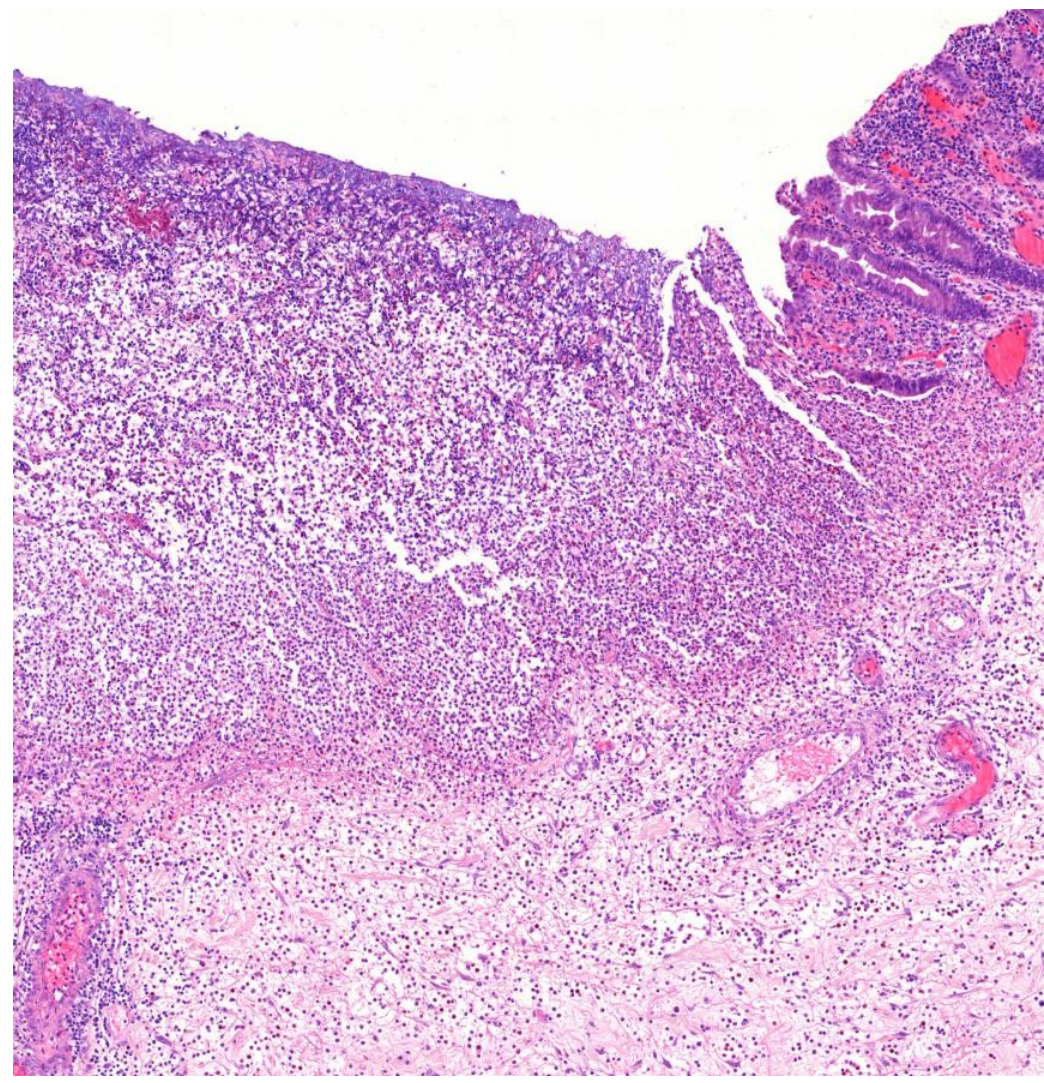
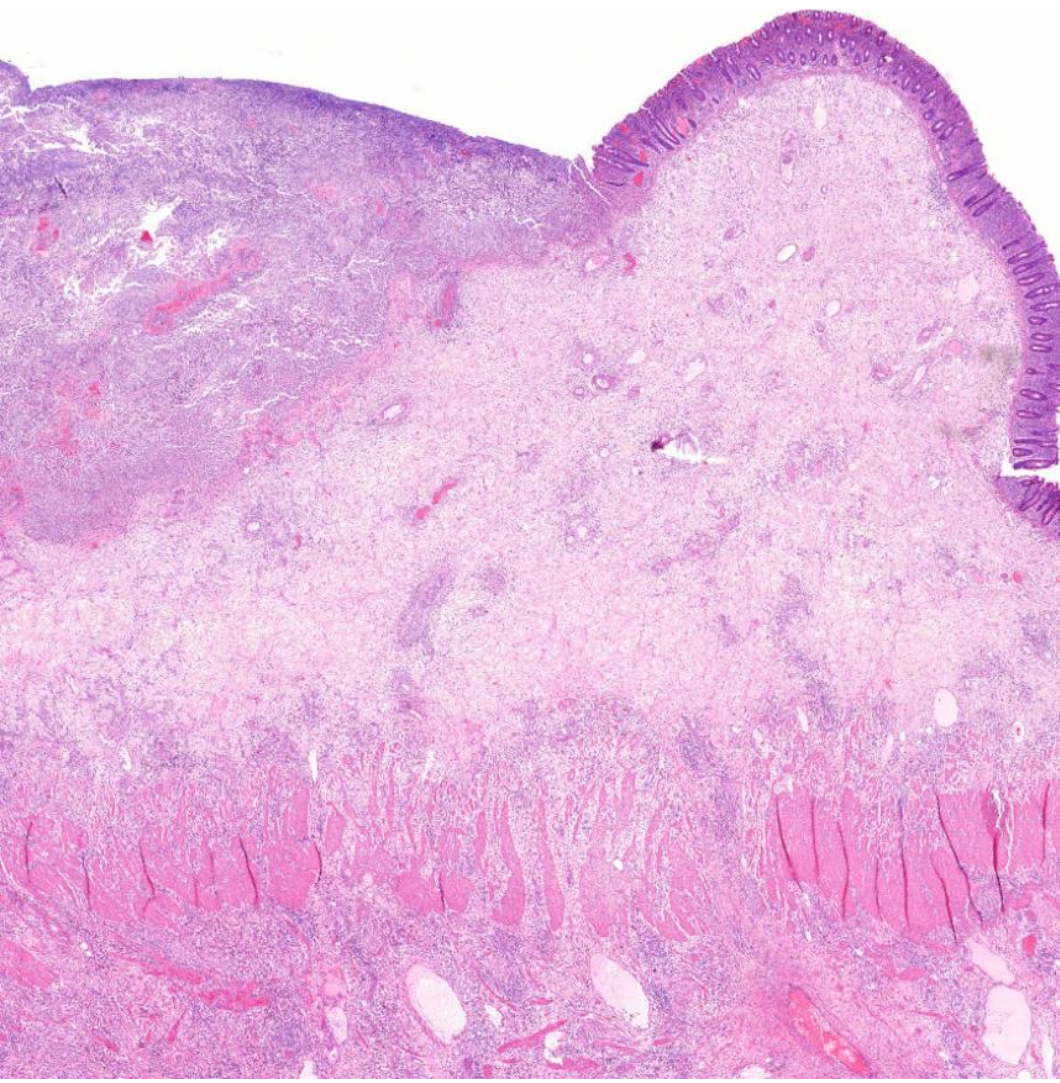
Colectomie droite

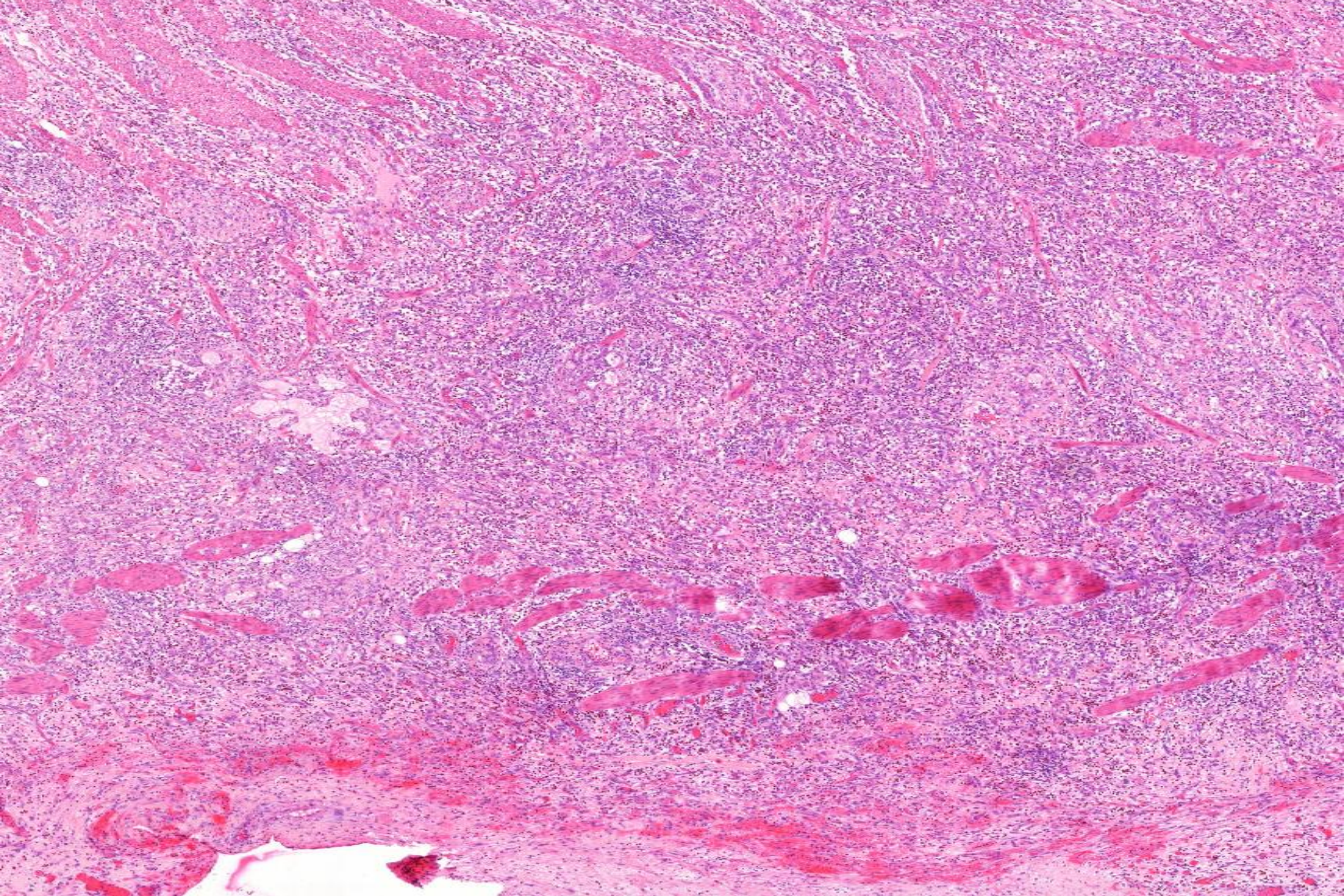


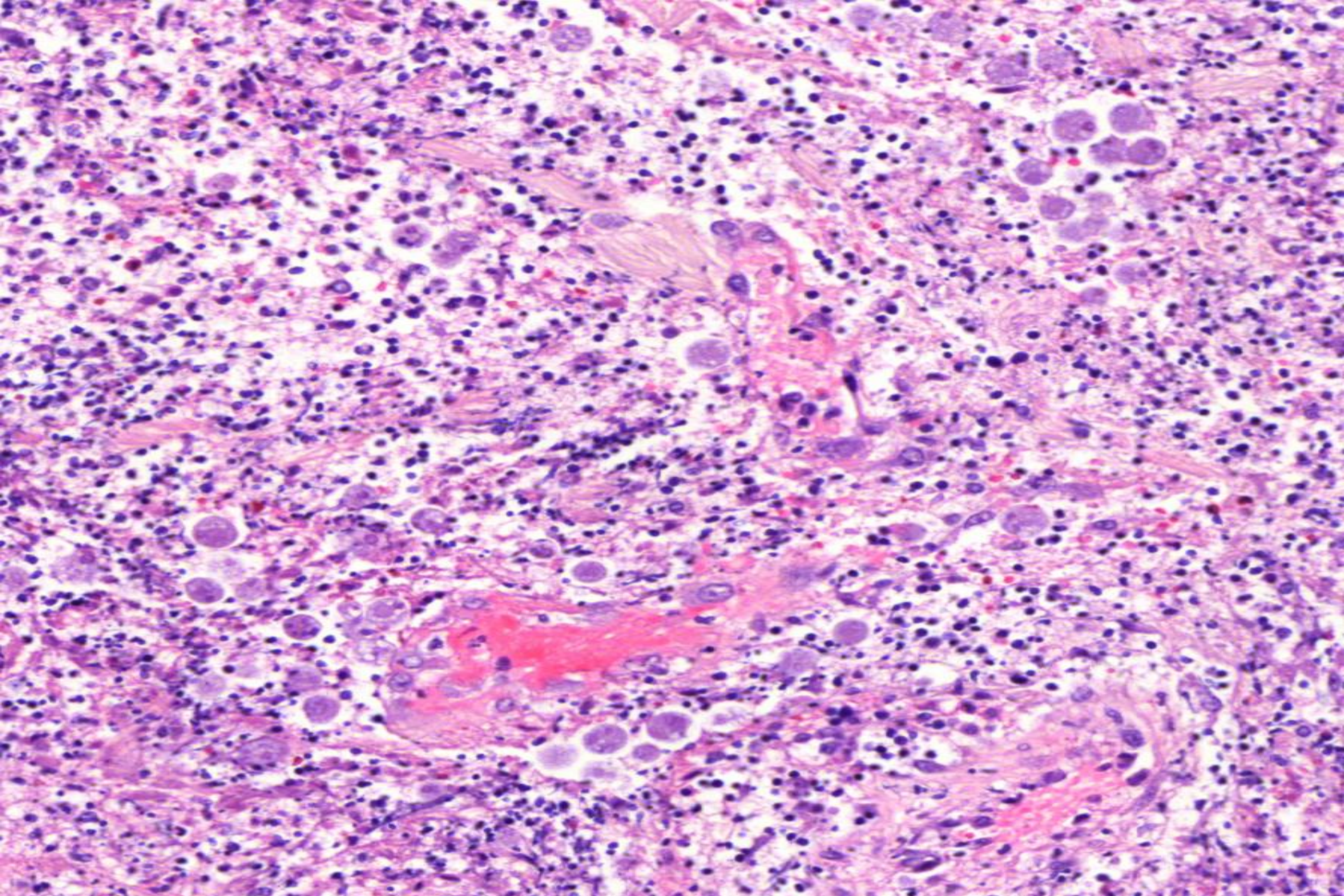


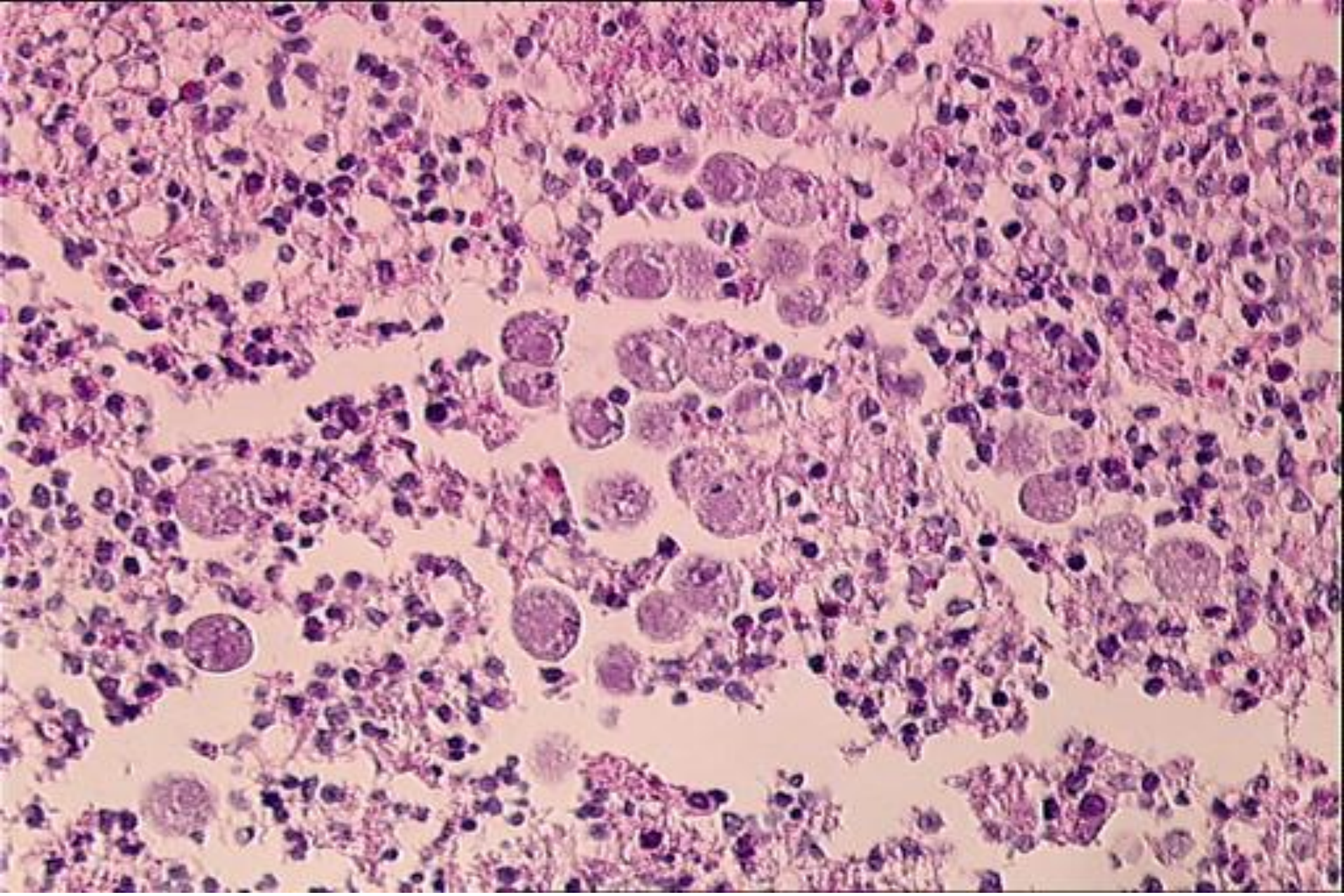


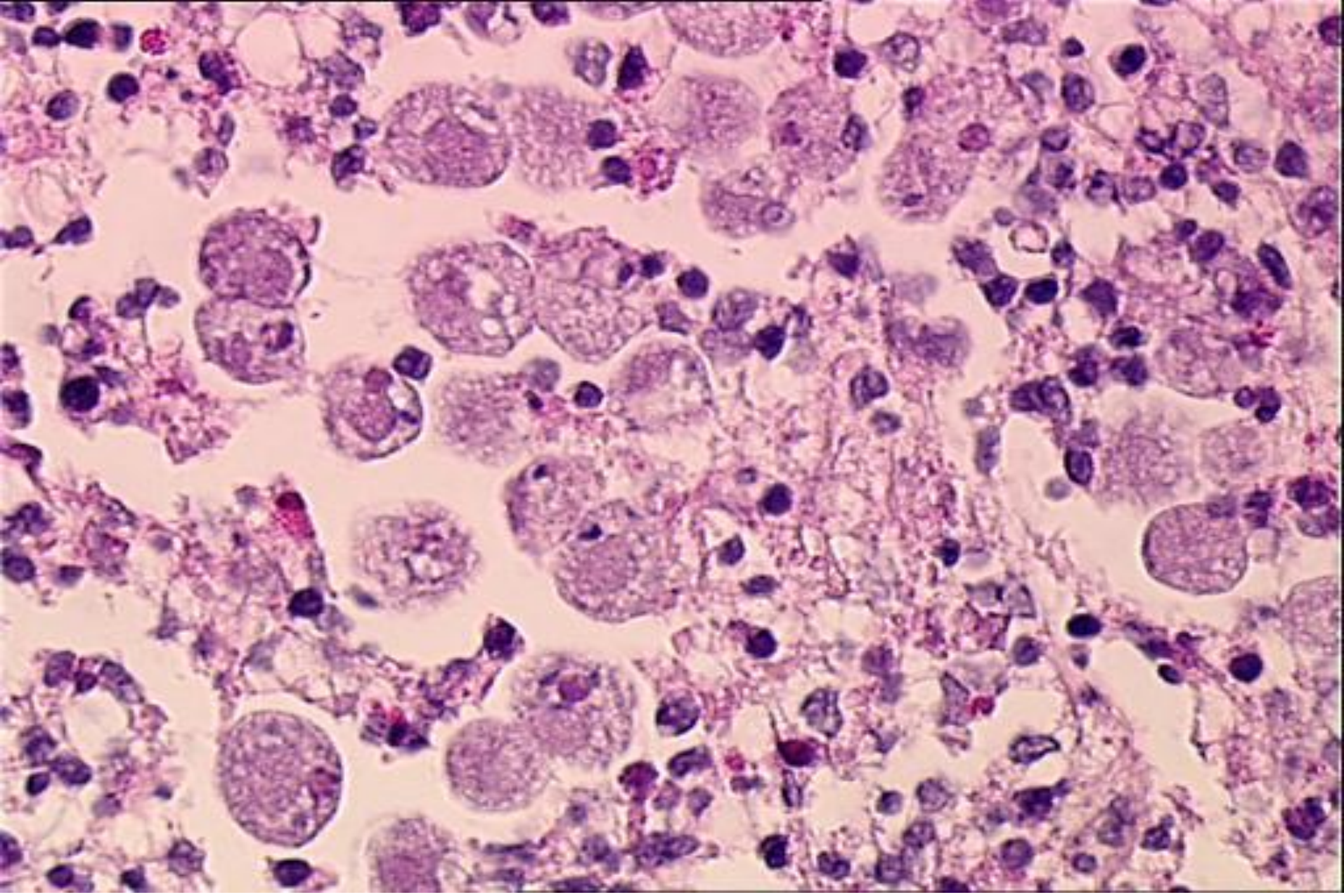


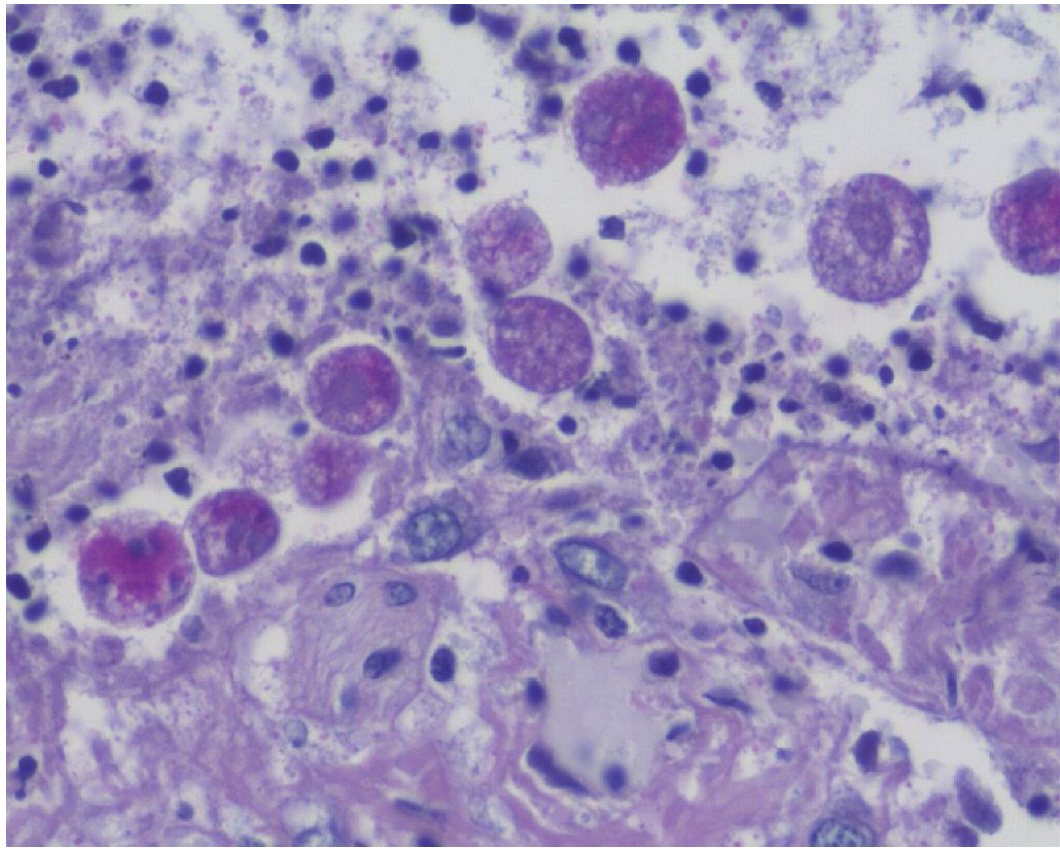
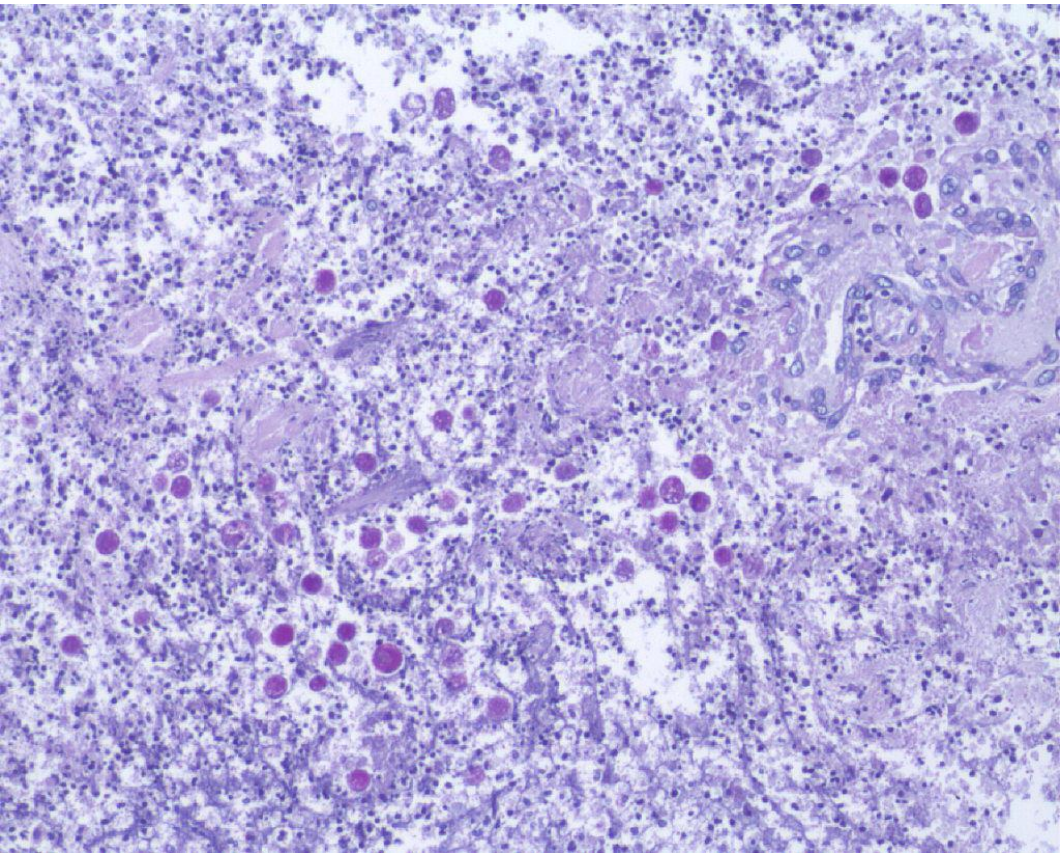












Conclusion :

Présence sur cette pièce de colectomie droite, de lésions de colite amibienne pseudo-tumorale extrêmement sévères, avec ulcérations profondes atteignant la musculature.

Cas N°11

point de discussion

- L'amibiase, y penser (si possible avant la pièce opératoire !)

Je vous remercie de votre attention

